

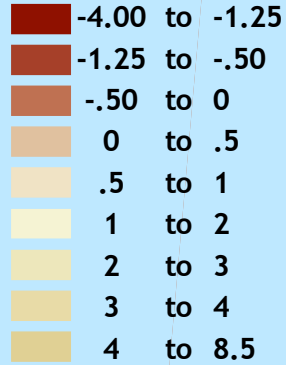
New Orleans Elevation by neighborhood with major roads

Use the zoom tool in the PDF to see greater detail (neighborhood & street names)

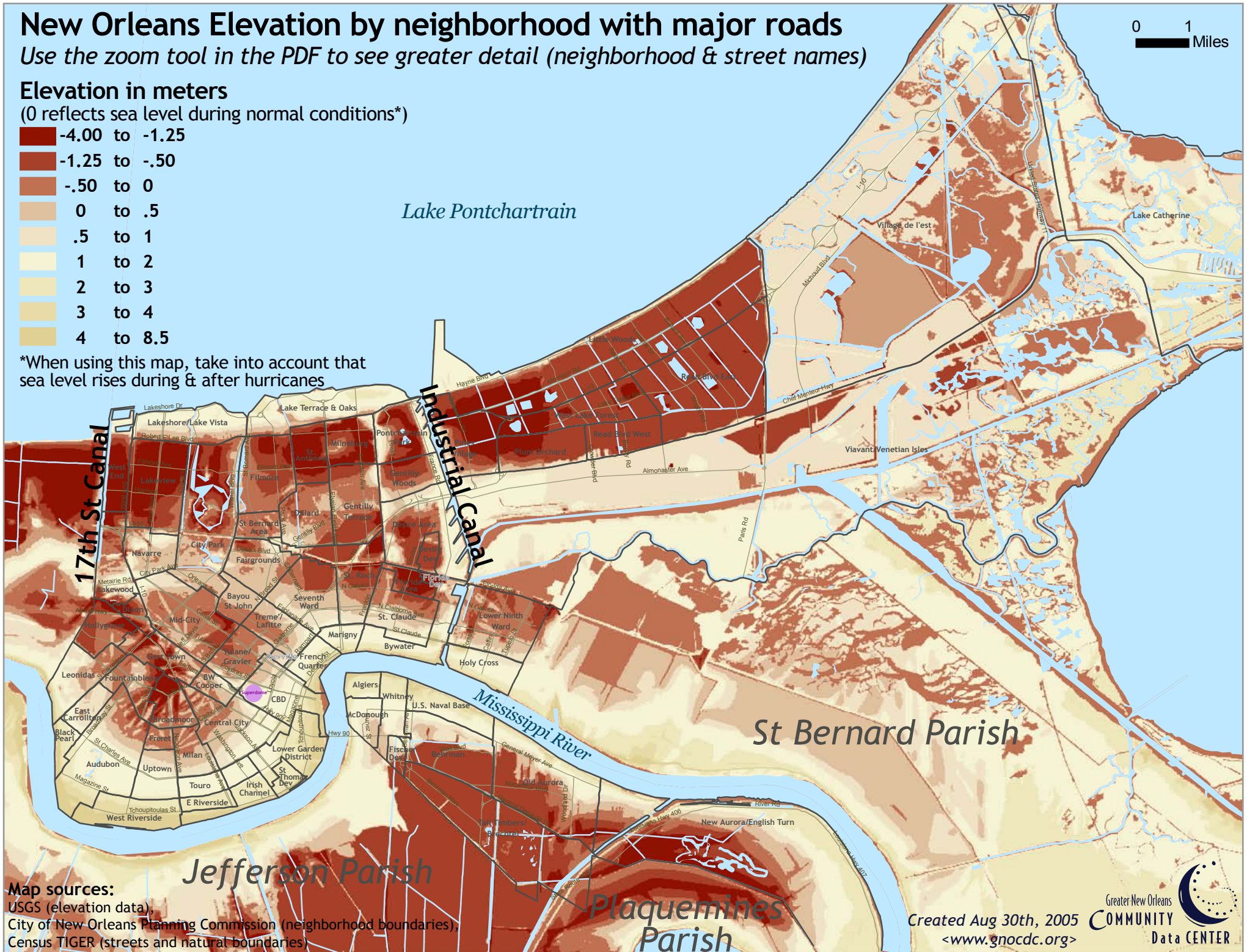
0 1 Miles

Elevation in meters

(0 reflects sea level during normal conditions*)



*When using this map, take into account that sea level rises during & after hurricanes



Map sources:
USGS (elevation data),
City of New Orleans Planning Commission (neighborhood boundaries),
Census TIGER (streets and natural boundaries)

Created Aug 30th, 2005
<www.gnocdc.org>
Greater New Orleans COMMUNITY Data CENTER